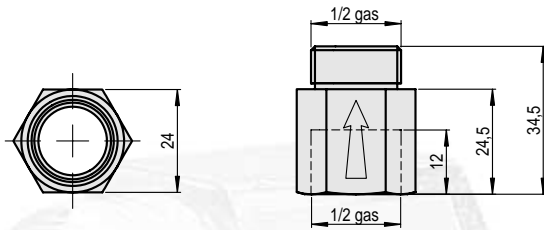


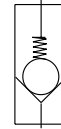
# Non-return valve, series CAV



## Application:

Specially designed for vacuum functions, the COVAL non-return valve corresponds to a feed-through section equivalent to a hole with a diameter of 9.6 mm.

It is very silent running and the automatic closing of its diaphragm ensures sealing of the system.



## Specifications:

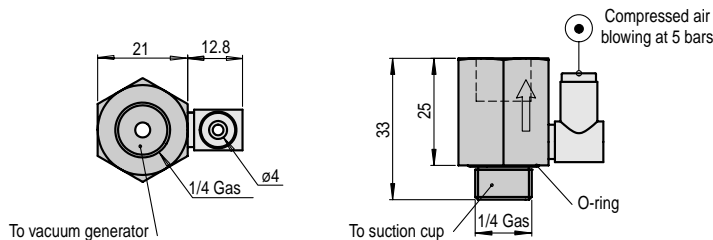
Valve material	Nitrile
Body material	Nickel-plated brass
Operating temp.	60°C max.

## CAV 12 D - CAV 12 E:

The difference between these two components lies in their sealing.

- CAV 12 D: large feed-through / small leak rate
- CAV 12 E: small feed-through / sealed (for a vacuum source with a suction of up to 70 NI/min).

# Controlled safety valve, series CSP



## Applications:

The safety valve in series CSP is a useful safety device in the event of loss of vacuum or emergency stop as it maintains the vacuum in the suction cup. Release is obtained by connecting the ancillary coupling to the pressure.

## Specifications:

Valve	Nitrile (NBR)
Body	Anodized aluminium
Filter	Stainless steel screen, 200 micrometres

## Fitting:

- One safety valve per suction cup.
- Use a vacuum generator of version T, with 75% vacuum.
- Blowing pressure of at least 5 bars.

